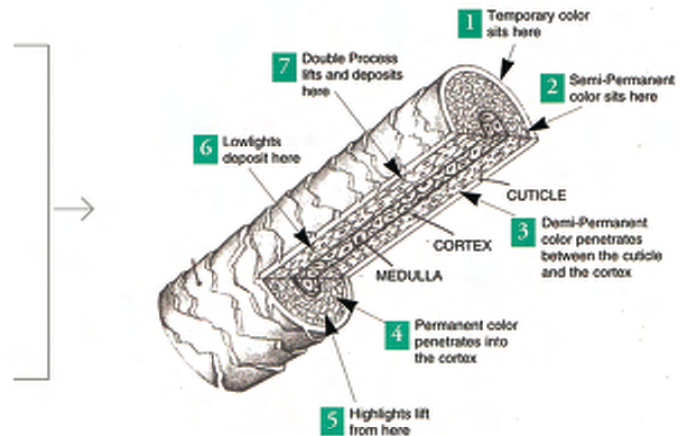


Understanding Hair And The Level System

This is what a strand of hair looks like greatly magnified. The illustration shows degrees of penetration of the seven hair color methods.



LEVELS

10	Very Light Blonde
9	Light Blonde
8	Medium Blonde
7	Dark Blonde
6	Light Brown
5	Medium Brown
4	Dark Brown
3	Very Dark Brown
2	Black
1	Blue/Black

Levels are the system of measurement used to define incremental changes in hair color. Blue/Black hair, found mostly in the Far East, is a level 1. Platinum blonde hair is a level 10. Permanent hair color can only consistently lighten your hair 4 levels. For changes greater than 4 levels, highlights, double process, or a combination of permanent color, high-lights or double process may be used.

Contact David by calling (212) 319- HAIR or write to david@davidgroshen.com
Visit DavidGroshen.com for more information or more tips on your hair!